

Vehicle Inspection Report

Date Inspected: 19/06/2025 13:07
Inspected By: Luke Smith

Reg: VX69HLR

VIN: JMZBP6SH601132382

Valuation

Cap ID	90706
Cap Clean	£11650
Cap Average	£10600
Cap Below	£9500

NAMA Grading



Grade

3

Appraised By: MAG Inspections

General Details

Make	Mazda	Transmission	Manual
Model	3 Gt Sport Tech Mhev - 1998cc	Date First Reg	18/09/2019
Body Type	Saloon	Doors	4
Mileage	48,665 miles	Colour	Red
Fuel Type	Petrol	Year of MFR	2019

Tyres & Wheels

OSF Depth	Wheel Trims
NSF Depth	Alloys
OSR Depth	Spare
NSR Depth	Tyre Comments

Interior Condition

Carpets	Good
Upholstery	Good
Seats	Good
Odour	No
Comments	

Miscellaneous

V5 Location	
MOT Location	
MOT Expiry	17/09/2025

Equipment

SD Card Nav	DAB	Cruise Control
Full Leather	Parking Camera	Auto Headlights
	Heated Front Seats	A/C
	Bluetooth	

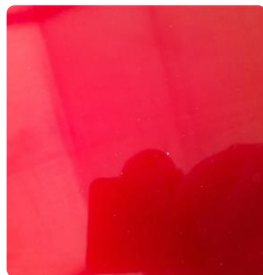
Service History

Service None
History
Stamps

Photos



Damage Assessment



Bonnet

Chipped

1 To 5

Smart Repair



Wing nsf

Chipped

1 To 5

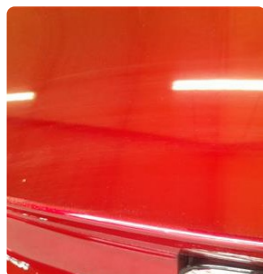
Smart Repair



Wing osf

Poor Previous
Repair

Poor Paint
Refinish



Boot Lid

Poor Previous
Repair

Poor Paint
Refinish

Comments